



# CAREW PEEL FOREST SCHOOL

1051 Ealing-Montalto Road, Carew, RD5,  
Ashburton 7775

Phone: 03 696 3556 Fax: 03 696 3793

[www.carewpeelforest.school.nz](http://www.carewpeelforest.school.nz) email:

[carew@carewpeelforest.school.nz](mailto:carew@carewpeelforest.school.nz)

May 2017



## COMING UP:

26 May - Cross Country - Waihi  
Gorge

30 May - Mesopotamia Trip

31st - Teachers PD at school,  
relievers in classes

2 June - Assembly 2.20pm  
Piwakawaka hosting

5 June - Queens Birthday

9 June - Winter Quad Tournament  
Y4-6, Geraldine Domain 11am

16 June - Assembly 2.20pm  
Korimako hosting

30 June Assembly 2.20pm Kereru  
hosting

## Kia ora koutou

The term is ticking away and the winter months are just ahead of us. We have had some cold starts to the mornings but we are happy to enjoy the superb sunny days that follow.

The school is undergoing further change as the new roll growth classroom build gets underway, it's exciting to see the progress happening. The foundations are laid and the builders are currently working on the floor joists and flooring. Our senior Y5/6 class, now comfortably housed in the hall for the duration of the build, are taking a daily 'shot' of the build which will be made into a time lapse movie. The adjoining existing classroom will be completely refurbished. When the project is finished, hopefully before the end of term 3, we will feel totally spoilt with a beautiful new learning hub for our teachers and Y4-6 students to learn in.

Our cross country event with Woodbury School is being held tomorrow at the Waihi Gorge. The children have been putting great effort into their training at school. Thanks to the teachers for preparing the children so well. We all look forward to seeing them running the course with a competitive spirit and giving their best. Thanks to family members who are able to come along, your encouragement and support makes the day more special.

Next week the whole school is off on an adventure to the high country area of Mesopotamia. This is part of our Mountains to the Sea (*Ko Rangitata te awa nei*) topic theme for this year. We will be learning about the significance of the braided river and the variety of habitats a braided river provides as well as experiencing, appreciating and enjoying this beautiful rugged environment at our back door. We extend our gratitude to the Prouting family for welcoming us onto the station. Sue will meet us at the Cook house and give us a short talk about the station. The children will be divided into four groups and each group will rotate around four half hour workshops. Personnel from Fish and Game, Ecan and DOC and our teachers will will take the workshops. We thank our parents for their overwhelming support offering help with transport and supervision. We couldn't do it without you. Fabulous!

Our Home and School are busy preparing for another fundraising catering event in early June. Their reputation for serving quality scrumptious food has certainly spread! We thank Kirsty, Deanna and the Home and School team for taking on these opportunities, and we applaud the wonderful support school families give to such events. Our children benefit from their hard work and family support in so many ways.

'Dairy changeover' is around the corner and with that comes a change within our school family. Sadly we will be farewelling six of our current students as they move to new farming areas, however we are lucky to be welcoming several new students from families moving into the area. Hopefully most of our farming community can take a well earned rest, with cows going off farm for their winter "breaks" in other pastures close by. Make sure you take time off to watch the rugby and Team NZ on the water!

Ngā mihi  
Kay

## WELCOME

Hunter Tasker, Maisie  
McKerchar and Jayden Weaver  
who have all joined the  
Piwakawakas

## GOODBYE'S

We say a sad farewell to the  
following children as they move  
with their families to new farming  
positions.

Sami, Daniel & Mandy Mead  
Niel Vicente  
Logan & Kelly Chubb  
our best wishes go with them

## CONGRATULATIONS

to the Connor family on the birth of  
Henry, a gorgeous baby brother for  
Olivia, Bri and Toby

We look forward to meeting him

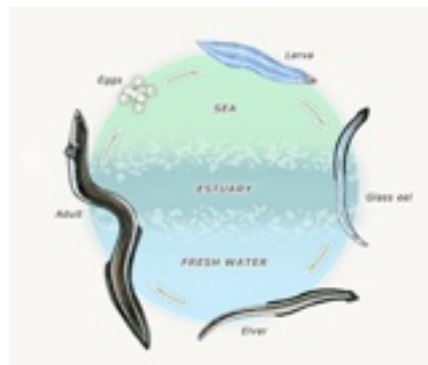


Hello everyone,

Room 1 has welcomed Hunter Tasker to school and next week sees Jayden Weaver join the Piwakawakas when he and his family move to the area. As always we are excited to be joined by more wonderful little people but have sadly farewelled Daniel Mead to the North Island, and soon Logan Chubb too.



Continuing our river topic the children at the end of last term expressed an interest in eels. This has led to us looking at the species of freshwater eels within New Zealand, the life cycle and their habitat. Can we find all aspects of their life cycle within the river?



We are also busy preparing for next week's whole school trip to Mesopotamia, which will see us exploring our Rangitata river looking at the formation of a braided river, sketching, pests/predators and electric fishing.

Lastly, keep up the wonderful work hearing your child read every night. The interest you take in their reading skills will encourage them to keep working hard, reading the book again gives them a chance to practice their skills and also get to know the book in greater detail so that they can begin to focus on the plot, and comprehension of the story. With the consolidation of their class learning alongside regular practice of their sight words they will be ready for trickier texts. If you would like to support our class reading programme, watch a reading lesson or are wanting more information on how to help your child's reading please pop into class or drop me a line to catch up.

Kind regards, Pip and the Piwakawakas.

**BUS REMINDER - Don't forget hi viz vests must be worn at all times as we are having to remind many of the children of this at the moment.**

Please remember to message your bus driver if your child isn't attending school at any time.

Brian's contact numbers are: 692 2728 - cell 028 403 7949

Jenny: 027 746 7267 - Steve: 027 305 0400 - Allan: 696 3565 / 027 207 4063

# PUKEKO YEAR 2/3



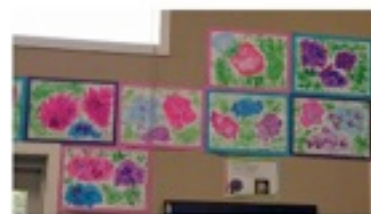
Dear Students, Parents and Caregivers

Well the term is racing on and we are enjoying our learning in our lovely warm learning hub. We are excited about our trip to Mesopotamia next week and hope that many families can join us to share this experience.

**Writing** – we have been learning about and writing different types of poems. We have written cinquain (san cane) poems and now are working on acrostic poems. We are working towards writing poems for the Geraldine Poetry Competition at the end of term. Here are a few samples

**Farming**  
**Milking cows**  
**Hard at baling**  
**Happy on the farm**  
**Hard work!**  
By Joe Wallace

**M ice running around**  
**I try to catch one**  
**C/S liced cheese in a trap**  
**E ating cheese, snap!**  
By Bryley and Brianna



**Maths** – we are getting used to practising our maths on Maths Whizz. We have also been learning about multiplication and times tables and the children have been quick to catch onto this concept.

**Topic** – we have been studying long fin eels, what amazing creatures! We have looked at their life cycle and please look at the photos of our eel models in plasticine.

**Cross-country** – children have been practising hard for the cross-country and have developed a good level of fitness as well as good attitudes in trying their best.



Thank you for your continued support in our learning journey; I really enjoy our Pukeko family.

Kind regards  
Jayne Rayner  
[jayne@carewpeelforest.school.nz](mailto:jayne@carewpeelforest.school.nz)



## TERM DATES 2017

**Term 2:** Monday 1 May - Friday 7 July

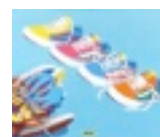
**Term 3:** Monday 24 July - Fri 29 Sept

**Term 4:** Mon 16 October - Fri 15 Dec

**Labour Day Mon 23 October**

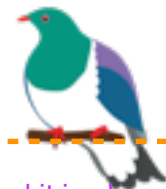
**Canterbury Anniversary Fri 17**

## MUFTI ODD SHOE DAY



**\$95.50 WAS RAISED ON MUFTI DAY TO HELP GERALDINE EDUCATIONAL SOCIAL WORKERS TRUST WHO SUPPORT OUR LOCAL SCHOOLS**





What a busy start we have had to term 2. We are now settled nicely into the very spacious hall and it is already feeling like 'our classroom'. We've also been excited to see some progress on the new learning hub. The foundations are in and you can start to imagine what it will look like when finished.



In Math we've been learning about perimeter and area, and students have been creating their very own mini houses.

They have had to think very carefully about scale and how much floor and wall area different household items take up. The little homes turned out great and I think we may have some young architects in the making.

We have recently started a poetry unit and I have been really surprised with the enthusiasm shown by all the children. They have been learning how to write various forms of poetry and how to use

poetic devices, such as similes and

metaphors and to make their poetry more effective.

By Rachel

Autumn

Colourful leaves float down like swaying snowflakes

Leaves slowly, slowly turn from lush green to dull brown

Autumn nights are cold except when by the fire

One of my favourite seasons, autumn

Kipper lays by the fire on a cold autumn night heating his body

The leaves look like stained glass windows in a church

Haiku

By Zoe

Winter is brewing

Kids are tumbling in the snow

Bitter cold winds blow past

work where they can celebrate and share their learning. If you still haven't managed to connect to your child's page, let me know and I'll send home another introduction letter with information about how to connect. The students have already enjoyed sharing their work and reading feedback from their parents and friends.



Autumn

There are a lot of leaves slowly fading like waves in the Ocean.

Kids jumping into piles of leaves, laughing wildly

Some of the leaves are blazing neons in the sunlight

The wind whistling through the old rickety shack sending shrieks and creaks through the air

The temperature plummets, Jack Frost has covered the land

Now trees are naked in the wind

By Logan

 Seesaw  
The Learning Journal

Landscape developments are continuing in the ex school house section. The grow house has been erected and almost ready to use. We look forward to the children getting involved in growing.

We thank the Hinds and Districts Lions who provided \$2000 towards the project, and also our Home and School who donated extra funds for us to purchase a superior model with a sturdier skin that has a 10 year guarantee. This is a wonderful addition to our new mini farm and edible gardens development.

**Thanks go out to Tim and Bruce for assembling the grow house.**



## KORIMAKO NEWS - Yr4/5

### Korimako May Antics!!!

Hello everyone - we are well on our way to being primed for our best efforts in cross country. The whole class have been running more than the required distance and we have been timing ourselves everyday to try and increase our cardiovascular fitness so we are best prepared to hit the hills and have an advantage come race day ! I am very impressed by the effort and dedication to this - a daily challenge which doesn't come easily and for many running is very uncomfortable.

In maths we have been focusing on measuring length and linear shapes, perimeter, area, mass and capacity. We have been using balance scales, kitchen scales and bathroom scales to measure the mass of many different everyday things. We also went outside and completed a booklet on estimating the measures of many vessels using water and then we actually tested the capacity for accuracy. These practical experiences provided relevant, authentic learning and an understanding of the different units of measure.

We are well on our way with our raft race down the Rangitata River. The class have created four rafts and they are required to work together as a team - excelling in their work and across our care codes to earn points along the river. As each group arrives at key points they must research an aspect of the river. This is an effective vehicle for much learning about the history, stations, landforms and biodiversity within the Rangitata Gorge. We are very excited about our pending trip and this week we are learning about the massive glacier that created the landforms in the gorge. This glacier left behind long ridges, ponds and kettle holes which we wonder could be the reason for so much quicksand in the river bed ? Did you know this massive glacier carved out our Rangitata Gorge 21,000 years ago and it descended as far down as the actual gorge and nosed its way out on to the Canterbury Plains not far from Peel Forest. This huge river of solid ice was nearly one kilometre deep in the valley where we will be driving next week !!!

Keep warm and "GO THE CRUSADERS !!!"

**Mrs Millar and the Korimako kids.**



When Tom and Harry and their Mum were in the Ashburton Frontrunner store last week, the manager looked at the boys school shirts and said, "Oh brilliant, we are currently giving away free balls to schools and we never go out your way." So he kindly gave the boys six cool soccer balls for the CPF children. Thank you Frontrunner!



## PIANO

Val Body has spaces for those who would like to learn to play the piano. Please contact Val on 615 7618 to register

## Community Snippets

### Your Office Administrator

We take care of the paperwork for a number of businesses in Mid and South Canterbury. We can process your PAYROLL, pay your SUPPLIERS, get the CUSTOMERS INVOICED and file your GST return. At the end of the year everything will be nice and tidy for your accountant. We can do it all or just the paperwork you need help with. **Please call us on 03 307 8448 if you want to know more. [www.yoa.co.nz](http://www.yoa.co.nz)**

## Support your school

Quigley Contracting, in partnership with your local school, are running the 'Chip in Project'.

Order your wood chip for calf pens off Quigley Contracting and we will donate \$1 per m<sup>3</sup> to your local primary school of choice.

To place your order phone:  
James 027 436 9989 or  
Ricky 027 436 9317

**Quigley**  
CONTRACTING  
[quigleycontracting.co.nz](http://quigleycontracting.co.nz)

\*Minimum order 40m<sup>3</sup>

### Calf Rearer Required

- \* 480 cows to calve
- \* Predominantly once a day feeding system
- \* Carew area

Please telephone for further details  
Lisa Williams  
03 303 6581

## WANTED

**3-4 bedroom house between  
Mayfield & Carew**

**(wish to stay in Carew area)**

**family of 4**

**Tidy & hardworking family with  
pets**

**Mervyn Meade 027 632 9825**

### Cyber Safety Parent Evening with John Parsons

**Internet consultant and Risk Assessment Consultant  
Monday 29th May, 7- 8.30pm**

**in the Geraldine High School hall**

**Hear John speak on the issues and dangers associated with  
the inappropriate use of computers, mobile phones, digital cameras and  
the internet.**

**This technology is marvellous, it allows us to communicate, connect and  
explore the world – we just need effective education to help reduce risk!**

**This is for all of the Geraldine Community to attend.**